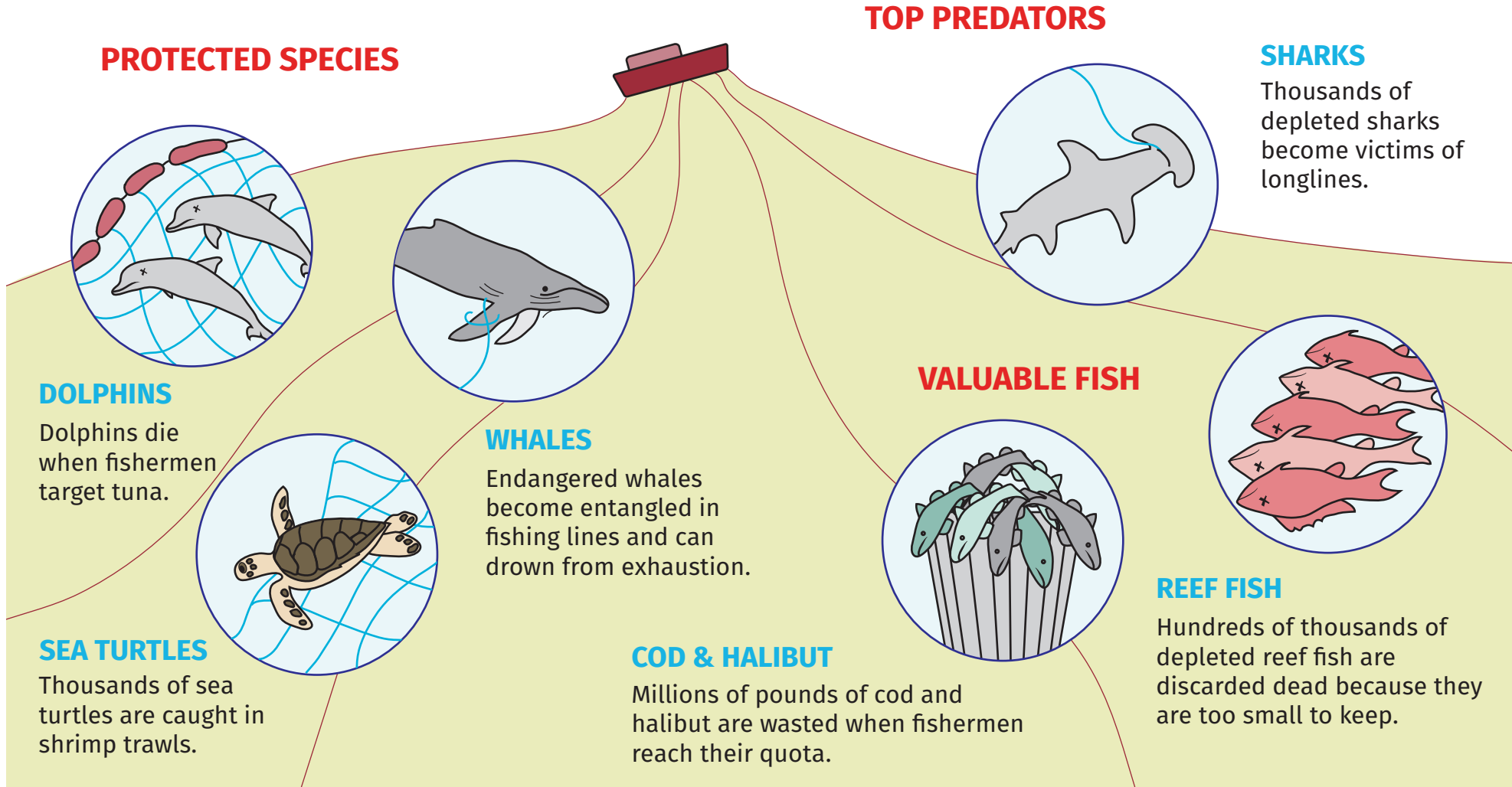


WHAT IS BYCATCH?

- **BYCATCH** is the catch of non-target fish and ocean wildlife, including what is brought to port and what is thrown overboard at sea, dead or dying.
- **BYCATCH** is one of the largest threats to maintaining healthy fish populations and marine ecosystems around the world.

Hundreds of thousands of dolphins, whales, sharks and sea turtles needlessly die each year.



US BYCATCH



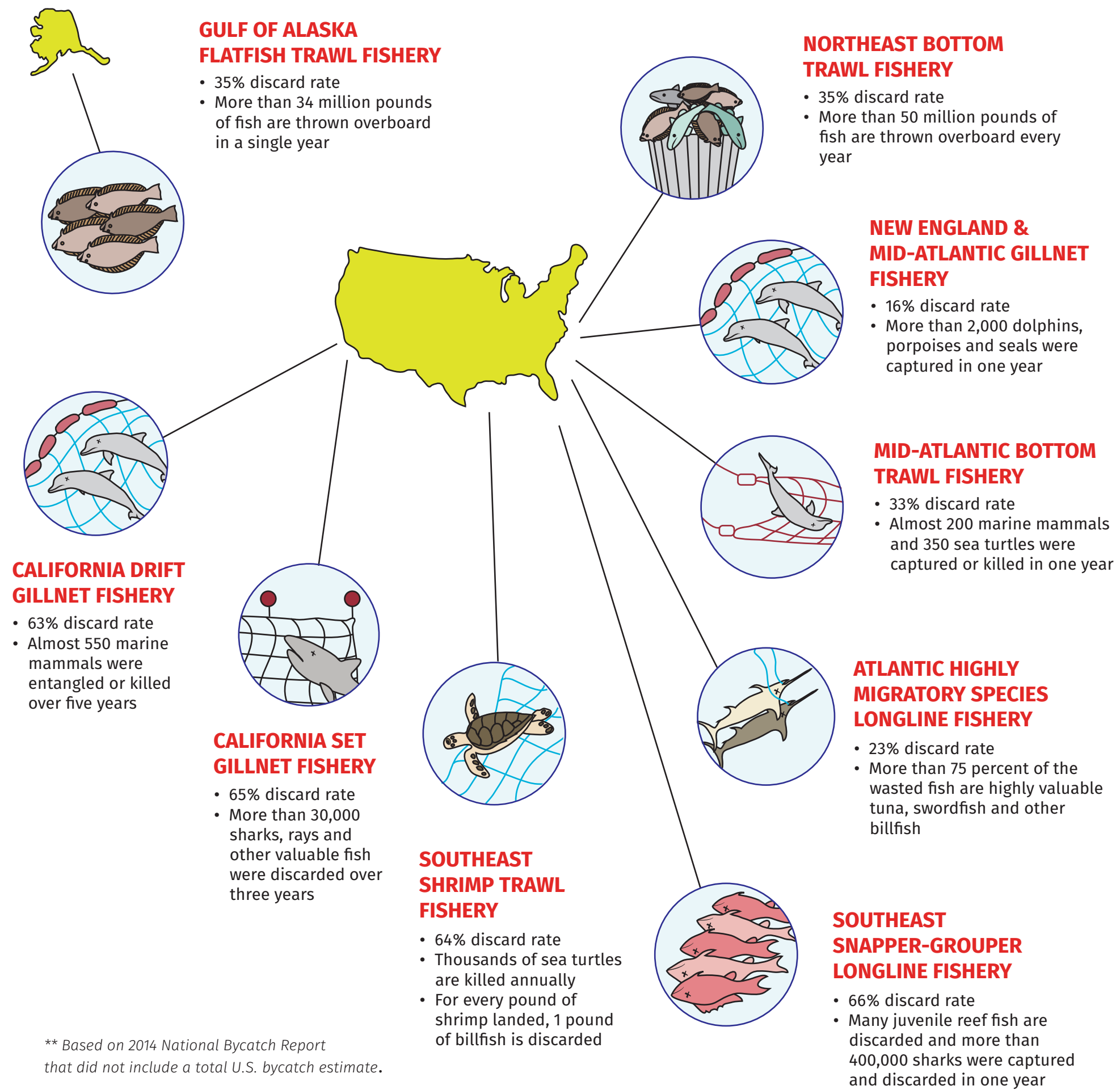
NINE DIRTY FISHERIES

Oceana determined that nine fisheries account for more than half of reported U.S. bycatch, but those fisheries account for only 7% of total landings.**

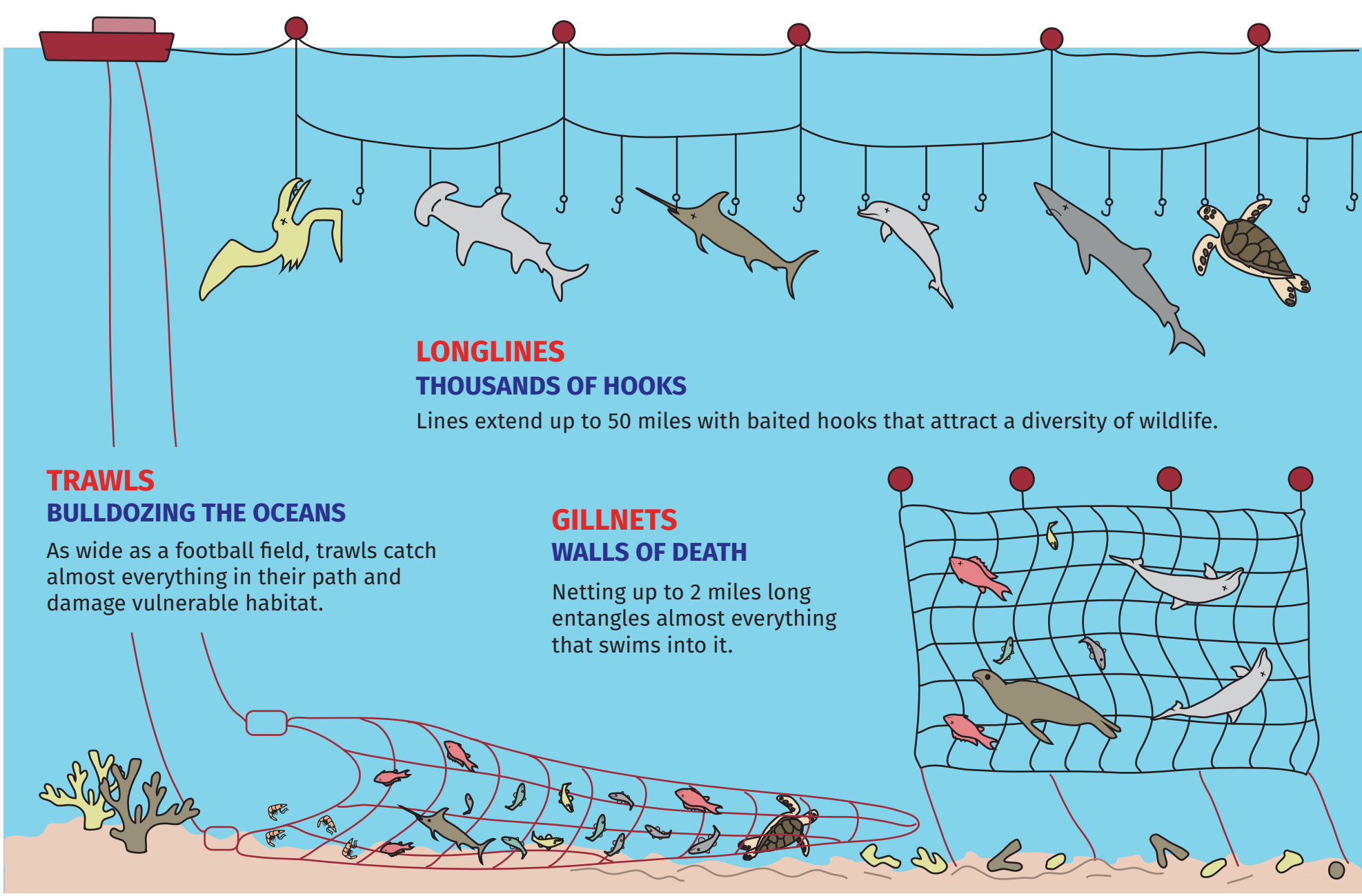
Combined, they throw away almost as much as they keep, which is the equivalent of almost half a billion seafood meals.

Keep 453 million pounds

Throw away 340 million pounds



DIRTY FISHING GEARS: HIGHEST BYCATCH RATES



SOLUTIONS TO REDUCE BYCATCH

COUNT COUNT EVERYTHING, BECAUSE EVERYTHING COUNTS

- ✓ Enhanced monitoring to accurately count all species that are caught, not just those that are targeted
- ✓ Consistent and timely reporting leads to accurate nationwide bycatch estimates

CAP ESTABLISH SCIENCE-BASED LIMITS

- ✓ Strict limits on all marine life caught in fisheries
- ✓ Close fishing for the season if and when bycatch limits are exceeded

CONTROL USE PROVEN TECHNICAL SOLUTIONS AND INNOVATIVE MANAGEMENT TO ENSURE BYCATCH LIMITS ARE NOT EXCEEDED

TURTLE EXCLUDER DEVICES (TEDS)

- ✓ Require the use of TEDs in all trawls
- ✓ Enhanced monitoring to enforce proper use of TEDs

USE CLEANER GEAR

- ✓ Use gear fixes that are already proven effective, such as circle hooks and excluder devices
- ✓ When fixes aren't enough, ban the use of harmful gears, such as gillnets, in favor of more selective methods

ENHANCED MONITORING

- ✓ Maintain accountability through catch quotas
- ✓ Avoid bycatch hotspots through real-time reporting or seasonally restricted areas

